



**SOCCKER 2024**

**SOCCKER 2024**



**HIGH FIVE**

ASB 2024

# YOUR KIT YOUR WAY



 **FreeStyle™**  
SUBLIMATION



**Go Full  
Custom**  
**or Go Fast**  
with  **Turbo**





## LINE UP

Elite Soccer	7
FreeStyle Sublimation	11
Stock Jerseys	15
Shorts	27
Ladies Elite Soccer	31
Ladies FreeStyle Sublimation	35
Ladies Stock Jerseys	37
Warm-Ups	41
Socks	47
Bags	49
Training	51

## ICONS

### color secure®

color secure® technology helps prevent dye migration



### Dry-Excel™

Moisture evaporation and wicking fabric



### Moisture Management

Fabric wicks moisture away keeping the body cool & dry



### Odor Resistant

Odor Resistant technology keeps garments fresher longer



### 4-Way Stretch

Stretch properties allow for increased mobility



### UPF

Garment protects against harmful UV rays



### Water Resistant

Resists rain & water to keep the body protected & dry





**STAY  
MATCH  
DAY  
COOL**

# POWERED BY coolcore®

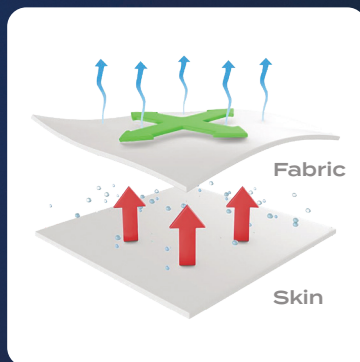
Coolcore® fabric is engineered to distribute moisture quickly throughout the garment.

As the moisture spreads it dries faster to keep you cool and comfortable all match long while providing UPF 50 sun protection.

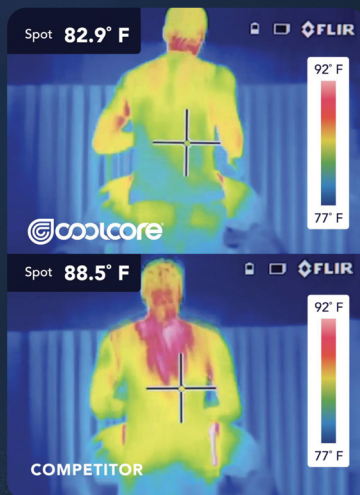
Regulated  
Evaporation

360° Moisture  
Transportation

Moisture  
Wicking



Patented Fabric  
Technology



Technology Comparison

The same athlete after  
20 minutes of activity

Explore  
Elite Soccer

POWERED BY  
coolcore®



321550  
pg. 7



321555  
pg. 9



321560  
pg. 9



325460  
pg. 7



321552  
pg. 31



321557  
pg. 33



321562  
pg. 33



325462  
pg. 31



321550  
**Elite Horizontal**



321550  
**Elite Lightning**

321560  
pg. 9  
**Elite Block**

325460



For available design lines visit [augustasportswear.ca/sublimation](http://augustasportswear.ca/sublimation)

## FREESTYLE SUBLIMATED ELITE JERSEY

**321550** Adult S-2XL  
**321551** Youth XXS-L

- 87% polyester/13% spandex with Coolcore® fabric technology
- 92% polyester/8% spandex mesh shoulder & back inserts with Coolcore® fabric technology
- Garment protects against the sun with 50+ UPF
- Tag-free label
- Two piece collar
- Set-in sleeves

COORDINATING LADIES | **321552** pg. 31



Faded Chevron



Goal Kick



COORDINATING LADIES | **325462** pg. 31

NEW

## PLAY90 SHORTS POWERED BY COOLCORE®

**325460** Adult S-3XL  
**325461** Youth S-XL

- 88% polyester/12% elastane Coolcore® fabric with color secure® technology that helps prevent dye migration
- Garment protects against the sun with 50+ UPF
- Tag-free label
- Covered elastic waistband with inside drawcord
- 7-inch inseam
- Youth inseam graded



BLACK 080   GRAPHITE 059   NAVY 065   ROYAL 060   WHITE 005   SCARLET 083



321550  
Elite  
Vertical

325460





321555  
**Elite Horizontal\***



321555  
**Elite Block**

◀ *Perfect for  
Goalkeeper  
Option*

321560  
**Elite Block**

321560  
**Elite Block**





For available design lines visit [augustasportswear.ca/sublimation](http://augustasportswear.ca/sublimation)

**NEW**

### FREESTYLE SUBLIMATED ELITE LONG SLEEVE JERSEY

**321555** Adult S-2XL  
**321556** Youth XXS-L

- 87% polyester/13% spandex with Coolcore® fabric technology
- 92% polyester/8% spandex mesh shoulder & back inserts with Coolcore® fabric technology
- Garment protects against the sun with 50+ UPF
- Tag-free label
- Two piece collar
- Set-in sleeves

COORDINATING LADIES | **321557** pg. 33



**Optic**



**Gradient**



### FREESTYLE SUBLIMATED ELITE 7" SHORTS

**321560** Adult S-2XL  
**321561** Youth XXS-L

- 87% polyester/13% spandex with Coolcore® fabric technology
- Garment protects against the sun with 50+ UPF
- Tag-free label
- Covered elastic waistband with inside drawcord
- 7-inch inseam
- Youth inseam graded

COORDINATING LADIES | **321562** pg. 33



**Optic Stripe**



**Faded Chevron**

**321555**  
**Elite**  
**Block**



**321560**  
**Elite**  
**Block**





FULLY  
REVERSIBLE



321530  
Clean  
Sheet



For available design lines visit  
[augustasportswear.ca/sublimation](http://augustasportswear.ca/sublimation)



**FREESTYLE SUBLIMATED  
 REVERSIBLE V-NECK JERSEY**

**321530** Adult S-2XL  
**321531** Youth S-L

- 100% polyester single ply reversible closed hole mesh
- Garment protects against the sun with 50+ UPF
- Tear away label
- Set-in sleeves



**Whirlwind**



**Optic**



**Peru**



**Center Stripe Fade**



321520  
**Faded  
Chevron**



321810  
**Faded  
Chevron**



321510  
**Catalan**



321810  
**Twin  
Stripe**



For available design lines visit  
[augustasportswear.ca/sublimation](http://augustasportswear.ca/sublimation)



### FREESTYLE SUBLIMATED TURBO V-NECK JERSEY

**321520** Adult S-2XL  
**322520** Youth S-L

- 100% polyester wicking knit
- Garment protects against the sun with 50+ UPF
- Tag-free label
- Raglan sleeves



Clean Sheet



Whirlwind



Optic



### FREESTYLE SUBLIMATED TURBO CREW NECK SOCCER JERSEY

**321510** Adult S-2XL  
**322510** Youth S-XL

- 100% polyester wicking knit
- Garment protects against the sun with 50+ UPF
- Tag-free label
- Set-in sleeves



Center Stripe Fade



Clean Sheet



Gradient



### FREESTYLE SUBLIMATED TURBO SOCCER SHORTS

**321810** Adult S-2XL  
**326810** Youth S-L

- 100% polyester wicking smooth knit
- Garment protects against the sun with 50+ UPF
- Tag-free label
- Covered elastic waistband with inside drawcord
- 7-inch inseam
- Youth inseam graded



Center Stripe Fade



Clean Sheet



Optic Stripe

FOR CANADIAN PRICING AND INVENTORY DETAILS  
 VISIT [WWW.AUGUSTASPORTSWEAR.CA](http://WWW.AUGUSTASPORTSWEAR.CA)



**NEW**





Back



NEW

**MADRID JERSEY**

**322240** Adult S-2XL  
**322241** Youth XXS-L

- 100% polyester wicking knit with color secure® technology that helps prevent dye migration
- Tag-free label
- Low profile tapered collar
- Raglan sleeves



BLACK/WHITE 420  
 COLUMBIA BLUE/WHITE 293  
 DK GREEN/LIME 838  
 DK GREEN/WHITE 438  
 ELECTRIC YELLOW/BLACK 78N



LIME/WHITE 693  
 MAROON/POWER PINK 829  
 MAROON/WHITE 245  
 NAVY/POWER BLUE 888  
 ORANGE/WHITE 320



POWER BLUE/WHITE 834  
 POWER PINK/WHITE 468  
 PURPLE/WHITE 450  
 ROYAL/GOLD 281  
 ROYAL/WHITE 280



SCARLET/BLACK 406  
 SILVER/BLACK 098  
 TEAL/WHITE 331  
 VEGAS GOLD/WHITE 250  
 WHITE/BLACK 226

FOR CANADIAN PRICING AND INVENTORY DETAILS VISIT [WWW.AUGUSTASPORTSWEAR.CA](http://WWW.AUGUSTASPORTSWEAR.CA)







Back

COORDINATING LADIES | 322922 pg. 37



NEW

## HAWK EVOLUTION JERSEY

**322990** Adult S-3XL  
**322991** Youth S-XL

- 100% polyester wicking knit with color secure® technology that helps prevent dye migration
- 90% polyester/10% spandex wicking mesh inserts with color secure® technology
- Tag-free label
- Low profile tapered collar
- Raglan sleeves
- Side vent detail



BLACK/  
WHITE  
420

COL BLUE/  
BLACK  
292

DK GREEN/  
WHITE  
438

GOLD/  
WHITE  
245

GRAPHITE/  
WHITE  
R04



KELLY/  
BLACK  
342

MAROON/  
WHITE  
380

NAVY/  
LIME  
666

NAVY/  
WHITE  
301

ORANGE/  
WHITE  
320



POWER BLUE/  
WHITE  
834

POWER  
ORANGE/  
BLACK  
Y59

POWER  
YELLOW/  
BLACK  
457

PURPLE/  
WHITE  
450

ROYAL/  
GOLD  
281



ROYAL/  
WHITE  
280

SCARLET/  
WHITE  
408

SILVER/  
BLACK  
098

WHITE  
005

TEAL/  
BLACK  
435

FOR CANADIAN PRICING AND INVENTORY DETAILS  
 VISIT [WWW.AUGUSTASPORTSWEAR.CA](http://WWW.AUGUSTASPORTSWEAR.CA)





Back



**SHEFFIELD JERSEY**

**322970** Adult S-3XL  
**322971** Youth XXS-L

- 100% polyester wicking knit with color secure® technology that helps prevent dye migration
- Tag-free label
- Raglan sleeves



BLACK/WHITE 420  
 COLUMBIA BLUE/WHITE 293  
 DARK GREEN/WHITE 438  
 ELECTRIC ORANGE/BLACK 81N  
 ELECTRIC YELLOW/BLACK 78N



GRAPHITE/WHITE R04  
 KELLY/BLACK 342  
 LIME/BLACK 530  
 MAROON/WHITE 380  
 NAVY/LIME 66G



NAVY/WHITE 301  
 ORANGE/WHITE 320  
 PURPLE/WHITE 450  
 POWER BLUE/BLACK 81B  
 ROYAL/GOLD 281



ROYAL/WHITE 280  
 SCARLET/BLACK 406  
 SCARLET/WHITE 408  
 WHITE 005  
 VEGAS GOLD/BLACK 252

FOR CANADIAN PRICING AND INVENTORY DETAILS  
 VISIT [WWW.AUGUSTASPORTSWEAR.CA](http://WWW.AUGUSTASPORTSWEAR.CA)





**WEMBLEY JERSEY**

**322930** Adult S-2XL

**322931** Youth XS-L

- 100% polyester wicking knit with color secure® technology that helps prevent dye migration
- Tag-free label
- Two piece collar
- Set-in sleeves



ATHLETIC GOLD/WHITE/BLACK 661  
 BLACK/GRAPHITE/WHITE 489  
 COLUMBIA BLUE/WHITE/NAVY 533  
 FOREST/BLACK/WHITE 148  
 GRAPHITE/BLACK/WHITE 173  
 KELLY/WHITE/BLACK 609



LIME/WHITE/BLACK 652  
 LIME/WHITE/NAVY 694  
 MAROON/WHITE/BLACK 162  
 NAVY/WHITE/GRAPHITE 372  
 ORANGE/BLACK/WHITE 322  
 POWER BLUE/BLACK/WHITE 837



POWER YELLOW/BLACK/WHITE 458  
 PURPLE/BLACK/WHITE 497  
 ROYAL/WHITE/ATHLETIC GOLD 180  
 ROYAL/WHITE/BLACK 150  
 SCARLET/WHITE/BLACK 588  
 SCARLET/NAVY/WHITE 656



WHITE/BLACK/GRAPHITE X26  
 VEGAS GOLD/WHITE/BLACK 605

FOR CANADIAN PRICING AND INVENTORY DETAILS VISIT [WWW.AUGUSTASPORTSWEAR.CA](http://WWW.AUGUSTASPORTSWEAR.CA)



COORDINATING LADIES/GIRLS | 6915/6916 pg. 38



**CUTTER+ V-NECK JERSEY**

6907 Adult S-3XL  
 6908 Youth S-XL

- 96% polyester/4% spandex lightweight knit with color secure® technology that helps prevent dye migration
- Garment protects against the sun with 50+ UPF
- Tearaway label
- Raglan sleeves



Back



BLACK/GOLD 421  
 BLACK/SCARLET 500  
 BLACK/WHITE 420  
 COLUMBIA BLUE/WHITE 293  
 DARK GREEN/WHITE 438  
 GOLD/WHITE 245



GRAPHITE/WHITE R04  
 LIME/ROYAL O3W  
 MAROON/WHITE 380  
 NAVY/SCARLET S20  
 NAVY/WHITE 301  
 ORANGE/BLACK 321



ORANGE/WHITE 320  
 PURPLE/WHITE 450  
 ROYAL/SCARLET W81  
 ROYAL/WHITE 280  
 SCARLET/BLACK 406  
 SCARLET/WHITE 408



VEGAS GOLD/BLACK 252  
 WHITE/BLACK 226  
 WHITE/NAVY 221  
 WHITE/ROYAL 220  
 WHITE/SCARLET 235

FOR CANADIAN PRICING AND INVENTORY DETAILS VISIT [WWW.AUGUSTASPORTSWEAR.CA](http://WWW.AUGUSTASPORTSWEAR.CA)





COORDINATING LADIES/GIRLS | 1522/1523 pg. 39



**CUTTER JERSEY**

1517 Adult S-3XL  
 1518 Youth XXS-XL

- 100% polyester wicking knit with color secure® technology that helps prevent dye migration
- 92% polyester/8% spandex wicking pinhole mesh underarms
- Tag-free label
- Raglan sleeves
- Longer length



Back



WHITE/ROYAL 220    DARK GREEN/WHITE 438    COLUMBIA BLUE/NAVY 294    KELLY BLACK 342    POWER YELLOW/BLACK 457    ATHLETIC GOLD/WHITE 596    LIME/WHITE 693



POWER BLUE/WHITE 834    POWER ORANGE/BLACK Y59    GRAPHITE/WHITE R04    BLACK/GOLD 421    BLACK/WHITE 420    MAROON/WHITE 380    NAVY/WHITE 301



ORANGE/WHITE 320    PURPLE/WHITE 450    RED/BLACK 407    RED/WHITE 400    ROYAL/ORANGE 284    ROYAL/WHITE 280    VEGAS GOLD/WHITE 250



WHITE/BLACK 226    WHITE/NAVY 221    WHITE/RED 225    WHITE/WHITE 230

**NFHS WHITE OPTION**  
 THE SOLID WHITE JERSEY IS NFHS AWAY TEAM UNIFORM COMPLIANT WHEN PAIRED WITH ANY WHITE SOCK

FOR CANADIAN PRICING AND INVENTORY DETAILS VISIT [WWW.AUGUSTASPORTSWEAR.CA](http://WWW.AUGUSTASPORTSWEAR.CA)



Back



1851



### SHORT SLEEVE MESH REVERSIBLE JERSEY

<b>1602</b>	Adult	S-2XL
<b>1603</b>	Youth	XXS-XL

- Two layers of 100% polyester sports mesh body with color secure® technology that helps prevent dye migration
- 100% polyester wicking smooth knit collar with color secure® technology
- Tear away label
- Fully reversible for wearing on either side
- Set-in sleeves
- Each layer hemmed separately for easy embellishment





**PLAY90 SHORTS  
POWERED BY COOLCORE®**

**NEW**

<b>325460</b>	Adult	S-3XL
<b>325461</b>	Youth	S-XL
<b>325462</b>	Ladies	XS-2XL

- 88% polyester/12% elastane Coolcore® fabric with color secure® technology that helps prevent dye migration
- Garment protects against the sun with 50+ UPF
- Tag-free label
- Covered elastic waistband with inside drawcord



BLACK  
080

GRAPHITE  
059

NAVY  
065



ROYAL  
060

SCARLET  
083

WHITE  
005



7-inch  
inseam  
(Youth  
inseam  
graded)

5-inch  
inseam

Ladies Fit



7-inch  
inseam  
(Youth  
inseam  
graded)

Ladies Fit

7-inch  
inseam



## OCTANE SHORTS

<b>1425</b>	Adult	S-3XL
<b>1426</b>	Youth	XXS-L
<b>1423</b>	Ladies	S-2XL

- 100% polyester wicking knit
- Full-cut
- Tag-free label
- Covered elastic waistband with inside drawcord



BLACK  
080

DARK  
GREEN  
035

GRAPHITE  
059

MAROON \*  
045



NAVY  
065

RED  
040

ROYAL  
060

SILVER  
099

SILVER  
GREY  
016

AVAILABLE IN  
LADIES ONLY



COLUMBIA  
BLUE  
089

GOLD  
025

KELLY  
030

ORANGE  
029

PURPLE \*  
050

AVAILABLE IN ADULT/YOUTH ONLY

\* Maroon & Purple shades can vary by brand, please contact our Customer Care with questions



6-inch  
inseam



### PRIMO 2.0 SHORTS

NEW

325934 Adult S-2XL

- 100% polyester wicking knit
- 100% Coolmax™ lining on white
- Tag-free label
- Covered elastic waistband



BLACK  
080



NAVY  
065



ROYAL  
060



SCARLET  
083



WHITE  
005



7-inch  
inseam  
(Youth  
inseam  
graded)



### PRIMO SHORTS

325390 Adult S-2XL

325391 Youth XXS-L

- 100% polyester wicking knit
- 100% Coolmax™ lining on white
- Tag-free label
- Covered elastic waistband with inside drawcord



BLACK  
080



NAVY  
065



ROYAL  
060



SCARLET  
083



WHITE  
005



321552  
**Elite Horizontal**

321562  
pg. 35  
**Elite Block**



321552  
**Elite Horizontal**

325462



For available design lines visit [augustasportswear.ca/sublimation](http://augustasportswear.ca/sublimation)

## LADIES FREESTYLE SUBLIMATED ELITE JERSEY

**321552** Ladies XS-2XL

- 87% polyester/13% spandex with Coolcore® fabric technology
- 92% polyester/8% spandex mesh shoulder & back inserts with Coolcore® fabric technology
- Garment protects against the sun with 50+ UPF
- Tag-free label
- Two piece collar
- Set-in sleeves

COORDINATING ADULT/YOUTH  
**321550/321551** pg. 7



**Peru**



**Corner Kick**



COORDINATING ADULT/YOUTH  
**325460/325461** pg. 7

**NEW**

## LADIES PLAY90 SHORTS POWERED BY COOLCORE®

**325462** Ladies XS-2XL

- 88% polyester/12% elastane Coolcore® fabric with color secure® technology that helps prevent dye migration
- Garment protects against the sun with 50+ UPF
- Tag-free label
- Covered elastic waistband with inside drawcord
- 5-inch inseam



BLACK  
080

GRAPHITE  
059

NAVY  
065

ROYAL  
060

WHITE  
005

SCARLET  
083



**321552**  
**Elite**  
**Vertical**

**325462**





321557  
**Elite Vertical**

325462  
pg. 33



321557  
**Elite Horizontal**

321562  
**Elite Block**





For available design lines visit  
[augustasportswear.ca/sublimation](http://augustasportswear.ca/sublimation)



**NEW**

### LADIES FREESTYLE SUBLIMATED ELITE LONG SLEEVE JERSEY

**321557** Ladies XS-2XL

- 87% polyester/13% spandex with Coolcore® fabric technology
- 92% polyester/8% spandex mesh shoulder & back inserts with Coolcore® technology
- Garment protects against the sun with 50+ UPF
- Tag-free label
- Two piece collar
- Set-in sleeves

COORDINATING ADULT/YOUTH  
**321555/321556** pg. 9



**Gradient**



**Elite Block**



### LADIES FREESTYLE SUBLIMATED ELITE 5" SHORTS

**321562** Ladies XS-2XL

- 87% polyester/13% spandex elastane with Coolcore® fabric technology
- Garment protects against the sun with 50+ UPF
- Tag-free label
- Covered elastic waistband with inside drawcord
- 5-inch inseam

COORDINATING ADULT/YOUTH  
**321560/321561** pg. 9



**Optic Stripe**



**Z Stripe**



**321557**  
**Elite**  
**Lightning**

**321562**  
**Elite**  
**Block**





321522  
**Diamond**  
Fade



321812  
**Diamond**  
Fade

321522  
**Peru**



321812  
**Twin**  
Stripe



For available design lines visit  
[augustasportswear.ca/sublimation](http://augustasportswear.ca/sublimation)



### LADIES FREESTYLE TURBO SUBLIMATED V-NECK JERSEY

321522 Ladies S-2XL

- 100% polyester smooth wicking knit
- Garment protects against the sun with 50+ UPF
- Tag-free label
- Raglan sleeves



Catalan



Z-Stripe



Optic



Clean Sheet



Whirlwind



Center Stripe



### LADIES FREESTYLE TURBO SUBLIMATED SHORTS

321812 Ladies S-2XL

- 100% polyester wicking smooth knit
- Garment protects against the sun with 50+ UPF
- Tag-free label
- Covered elastic waistband with inside drawcord
- 5-inch inseam



Clean Sheet



Whirlwind



Center Stripe

FOR CANADIAN PRICING AND INVENTORY DETAILS  
 VISIT [WWW.AUGUSTASPORTSWEAR.CA](http://WWW.AUGUSTASPORTSWEAR.CA)





Back

COORDINATING ADULT/YOUTH  
322990/322991 pg. 17



NEW

LADIES HAWK EVOLUTION JERSEY

322992 Ladies XS-2XL

- 100% polyester wicking knit with color secure® technology that helps prevent dye migration
- 90% polyester/10% spandex wicking mesh inserts with color secure® technology
- Tag-free label
- Low profile tapered collar
- Raglan sleeves
- Side vent detail



BLACK/WHITE 420    COL BLUE/BLACK 292    DK GREEN/WHITE 438    GOLD/WHITE 245    GRAPHITE/WHITE R04



KELLY/BLACK 342    MAROON/WHITE 380    NAVY/LIME 666    NAVY/WHITE 301    ORANGE/WHITE 320



POWER BLUE/WHITE 834    POWER ORANGE/BLACK Y59    POWER YELLOW/BLACK 457    PURPLE/WHITE 450    ROYAL/GOLD 281



ROYAL/WHITE 280    SCARLET/WHITE 408    SILVER/BLACK 098    WHITE 005    TEAL/BLACK 435



COORDINATING ADULT/YOUTH  
6907/6908 pg. 23



### LADIES CUTTER+ V-NECK JERSEY

6915 Ladies XS-2XL  
6916 Girls S-L

- 96% polyester/4% spandex lightweight knit with color secure® technology that helps prevent dye migration
- Garment protects against the sun with 50+ UPF
- Tearaway label
- Raglan sleeves



BLACK/  
WHITE  
420

COLUMBIA  
BLUE/  
WHITE  
293

DARK  
GREEN/  
WHITE  
438

GOLD/  
WHITE  
245

GRAPHITE/  
WHITE  
R04

LIME/  
ROYAL  
O3W



MAROON/  
WHITE  
380

NAVY/  
WHITE  
301

ORANGE/  
WHITE  
320

PURPLE/  
WHITE  
450

ROYAL/  
WHITE  
280

SCARLET/  
WHITE  
408



TEAL/  
WHITE  
331

VEGAS  
GOLD/  
WHITE  
250

WHITE/  
BLACK  
226

WHITE/  
ROYAL  
220

WHITE/  
SCARLET  
235

WHITE  
005



CUTTER



COORDINATING ADULT/YOUTH  
1517/1518 pg. 25



### LADIES CUTTER JERSEY

1522 Ladies S-2XL  
1523 Girls S-L

- 100% polyester wicking knit with color secure® technology that helps prevent dye migration
- 92% polyester/8% spandex wicking pinhole mesh underarms
- Tag-free label
- Raglan sleeves
- Contoured bottom



BLACK/  
GOLD  
421    BLACK/  
WHITE  
420    DARK  
GREEN/  
WHITE  
438    MAROON/  
WHITE  
380    NAVY/  
WHITE  
301    ORANGE/  
WHITE  
320



POWER  
PINK/  
WHITE  
468    PURPLE/  
WHITE  
450    ROYAL/  
ORANGE  
284    ROYAL/  
WHITE  
280    RED/  
BLACK  
407    RED/  
WHITE  
400



VEGAS  
GOLD/  
WHITE  
250    WHITE/  
BLACK  
226    WHITE/  
NAVY  
221    WHITE/  
RED  
225    WHITE/  
ROYAL  
220

LADIES STOCK JERSEYS



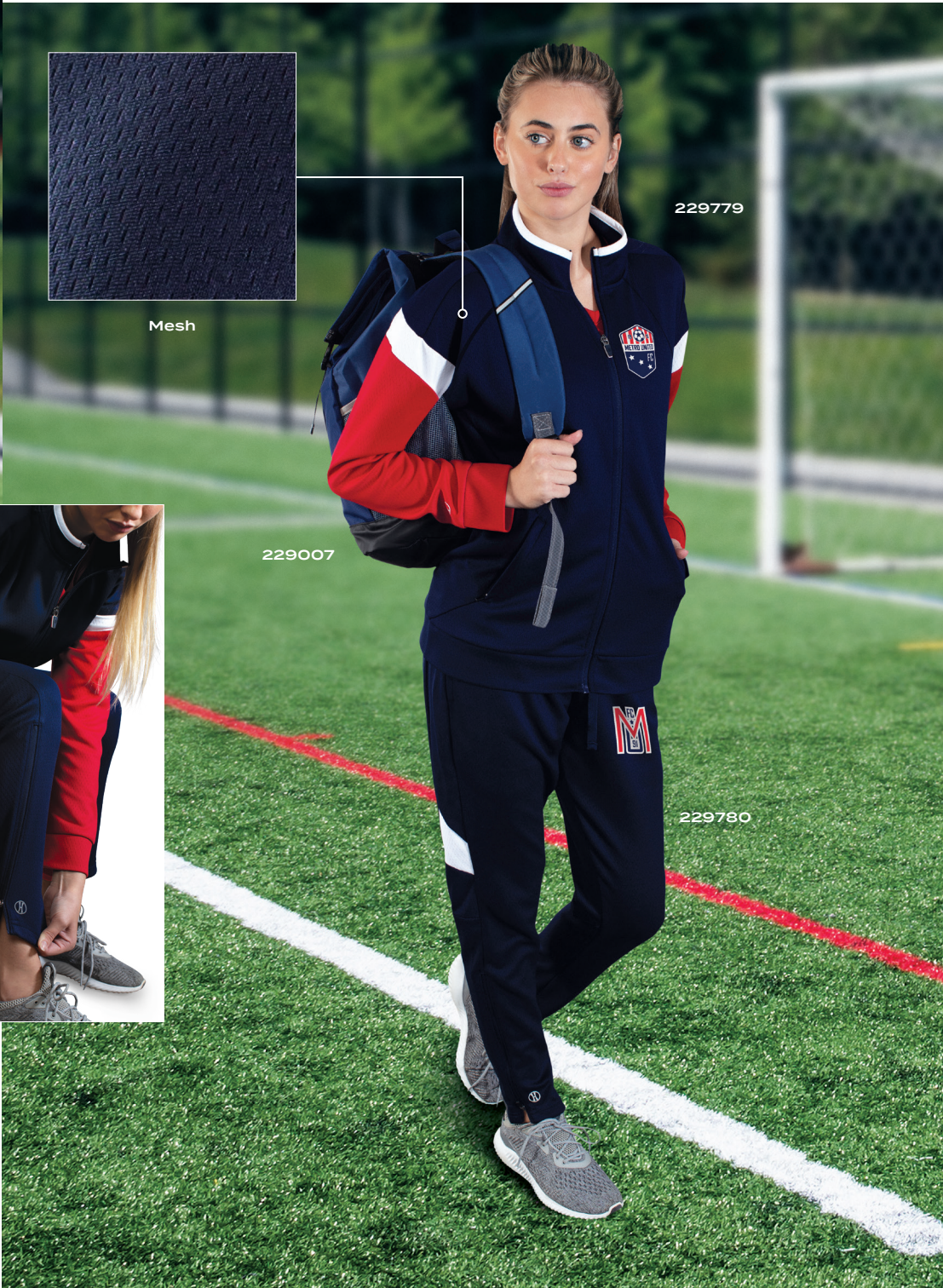
229579

229431

229580



Mesh



229779

229007

229780



Zippered leg

COORDINATING HOODIE  
222584





Ladies Fit



Zipper on Outside Lower Leg



### LIMITLESS JACKET

<b>229579</b>	Adult	S-3XL
<b>229679</b>	Youth	S-XL
<b>229779</b>	Ladies	XS-2XL

- Dry-Excel™ 100% polyester wicking double knit with mesh texture
- Ladies' fit on 229779
- Raglan sleeves
- Front zippered pockets



BLACK/WHITE 420    NAVY/WHITE 301    CARBON/WHITE F52    ROYAL/WHITE 280    SCARLET/WHITE 408    BLACK/BLACK 425    MAROON/WHITE 380



DARK GREEN/WHITE 438    BLACK/WHITE/GOLD 532    NAVY/WHITE/GOLD W57    BLACK/WHITE/ORANGE W12    BLACK/WHITE/SCARLET C39    NAVY/WHITE/SCARLET W53



### LIMITLESS PANT

<b>229580</b>	Adult	S-3XL
<b>229680</b>	Youth	S-XL
<b>229780</b>	Ladies	XS-2XL

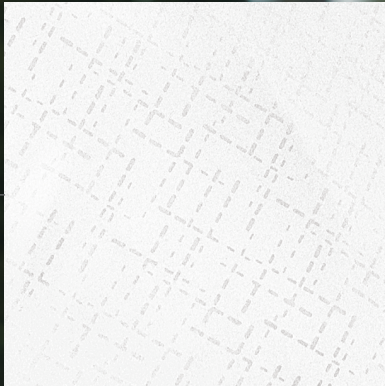
- Dry-Excel™ 100% polyester wicking double knit mesh texture
- Pinhole micromesh back knee inserts
- Ladies' fit on 229780
- Covered elastic waistband with inside drawcord
- Side seam pockets
- Tapered leg
- Zipper on outside lower leg



BLACK/BLACK 425    BLACK/WHITE 420    CARBON/WHITE F52    DARK GREEN/WHITE 438    MAROON/WHITE 380    NAVY/WHITE 301    ROYAL/WHITE 280    SCARLET/WHITE 408



COORDINATING PULLOVER  
229533/229633/229733



Embossed Pattern Insert



Ladies Fit



### SERIESX HOODED JACKET

<b>229528</b>	Adult	S-3XL
<b>229628</b>	Youth	S-XL
<b>229728</b>	Ladies	XS-2XL

- Micron™ polyester is a lightweight, wind/water-resistant fabric
- 100% polyester micromesh lining
- Ladies' fit on 229728
- 3-piece hood with spandex binding
- Set-in sleeves
- Front zippered pockets
- Elastic cuffs
- Adjustable bottom hem with hidden shockcord closure in right pocket on Adult
- Alternate pants: 229095



AVAILABLE IN ADULT & LADIES ONLY

BLACK/ WHITE 420	CARBON/ WHITE F52	NAVY/ WHITE 301	BLACK/ ORANGE 423	BLACK/ SCARLET 500	DARK GREEN/ WHITE 438	MAROON/ WHITE 380	NAVY/ SCARLET S20	ROYAL/ WHITE 280	SCARLET/ WHITE 408
------------------------	-------------------------	-----------------------	-------------------------	--------------------------	--------------------------------	-------------------------	-------------------------	------------------------	--------------------------



Zipper on  
Outside  
Lower Leg



### SERIESX PANT

<b>229531</b>	Adult	S-3XL
<b>229631</b>	Youth	S-XL
<b>229731</b>	Ladies	XS-2XL

- Micron™ polyester is a lightweight, wind/water-resistant fabric
- 100% polyester micromesh lining
- Ladies' fit on 229731
- Exposed brushed elastic waistband with inside drawcord
- Side seam pockets
- Tapered leg
- Articulated seaming at the knees
- Covered elastic cuff at leg opening
- Zipper on outside lower leg



AVAILABLE IN ADULT  
& LADIES ONLY

AVAILABLE IN  
ADULT ONLY

BLACK 080	CARBON J96	NAVY 065	BLACK/ WHITE 420	ROYAL/ WHITE 280	SCARLET/ WHITE 408	DARK GREEN/ WHITE 438	MAROON/ WHITE 380
--------------	---------------	-------------	------------------------	------------------------	--------------------------	--------------------------------	-------------------------

Back Welt  
Pocket



## RETRO COLLECTION



Ladies Fit



Zipper on Outside Lower Leg



### RETRO GRADE JACKET

**229561** Adult S-3XL

**229661** Youth S-XL

**229761** Ladies XS-2XL

- Dry-Excel™ 100% polyester performance terry
- Ladies' fit on style 229761
- 3-piece mesh lined hood with spandex binding
- Raglan sleeves
- Front pockets
- Spandex bound cuff

AVAILABLE IN ADULT & LADIES ONLY



BLACK/  
ORANGE  
423

BLACK/  
SCARLET  
500

BLACK/  
WHITE  
420

GRAPHITE/  
WHITE  
R04

PURPLE/  
WHITE  
450

FOREST/  
WHITE  
436

MAROON/  
WHITE  
380



NAVY/  
SCARLET  
S20

NAVY/  
WHITE  
301

ROYAL/  
WHITE  
280

SCARLET/  
WHITE  
408



### RETRO GRADE PANT

**229562** Adult S-3XL

**229662** Youth S-XL

**229762** Ladies XS-2XL

- Dry-Excel™ 100% polyester performance terry
- Ladies' fit on style 229762
- Exposed brushed elastic waistband with inside drawcord
- Front pockets
- Back welt pocket
- Tapered leg

AVAILABLE IN ADULT & LADIES ONLY



BLACK/  
WHITE  
420

NAVY/  
WHITE  
301

ROYAL/  
WHITE  
280

GRAPHITE/  
WHITE  
R04

SCARLET/  
WHITE  
408

PURPLE/  
WHITE  
450

FOREST/  
WHITE  
436

MAROON/  
WHITE  
380



Ladies Fit



Zipper on Outside Lower Leg



NEW

### CROSTOWN JACKET

<b>223530</b>	Adult	S-3XL
<b>223630</b>	Youth	S-L
<b>223730</b>	Ladies	S-2XL

- Dry-Excel™ 100% polyester double-knit
- Dry-Excel™ 100% polyester mesh inserts
- Ladies' fit on style 223730
- Set-in sleeves
- Front zippered pockets
- Open bottom
- Dropped tail



BLACK/BLACK 425

BLACK/WHITE 420

GRAPHITE/WHITE RO4

NAVY/WHITE 301

ROYAL/WHITE 280

SCARLET/WHITE 408

WHITE/BLACK 226



NEW

### CROSTOWN PANT

<b>223531</b>	Adult	S-3XL
<b>223631</b>	Youth	S-L
<b>223731</b>	Ladies	S-2XL

- Dry-Excel™ 100% polyester double-knit
- Dry-Excel™ 100% polyester mesh inserts
- Ladies' fit on style 222731
- Covered elastic waistband with inside drawcord
- Side seam pockets
- Tapered leg



BLACK/BLACK 425

BLACK/WHITE 420

GRAPHITE/WHITE RO4

NAVY/WHITE 301

ROYAL/WHITE 280

SCARLET/WHITE 408

WHITE/BLACK 226



## MEDALIST 2.0 COLLECTION

COORDINATING PULLOVER  
4386/4388



Ladies Fit



Zipper on  
Outside  
Lower Leg

## MEDALIST JACKET 2.0

<b>4395</b>	Adult	S-3XL
<b>4396</b>	Youth	XS-L
<b>4397</b>	Ladies	XS-2XL

- Heavyweight 100% polyester matte brushed tricot
- Ladies' fit on style 4397
- Heat sealed label
- Set-in sleeves
- Front seam pockets
- Self-fabric cuffs
- Alternate pants 7726/7728, 7731/7732/7733



## MEDALIST PANT 2.0

<b>7760</b>	Adult	S-3XL
<b>7761</b>	Youth	XS-L
<b>7762</b>	Ladies	XS-2XL

- Heavyweight 100% polyester matte brushed tricot
- Ladies' fit on style 7762
- Heat sealed label
- Covered elastic waistband with inside drawcord
- Side seam pockets



Back Yoke



AVAILABLE  
IN ADULT &  
LADIES ONLY



Back

Heal/Toe Construction



Uncuffed

Back

Heal/Toe Construction



**IMPACT+**



**IMPACT+**



NEW

**IMPACT+ CHILL SOCCER SOCKS**

**329130** Large (10-13)  
Medium (9-11)  
Small (7-9)

- Made from Repreve® 93% recycled polyester/6% rubber/1% other fibers
- Soil-release properties
- Knee-length sock with fold-down cuff
- Extra cushioning and support in areas of the foot and ankle that are susceptible to rubbing, impact or injury
- Arch compression reduces fatigue and aids circulation
- Left and right sock construction for a better fit

**IMPACT+ SOCCER SOCKS**

**329120** Large (10-13)  
Adult Medium (9-11)  
Small (7-9)

- 85% nylon/7% polyester/5% rubber/3% spandex
- Knee-length sock with fold-down cuff
- Extra cushioning and support in areas of the foot and ankle that are susceptible to rubbing, impact or injury
- Arch compression reduces fatigue and aids circulation

**SOCCER SOCKS**

**6031** Large (10-13)  
Medium (9-11)  
Small (7-9)

- 80% acrylic/15% nylon/5% elastic
- Knee-length tube sock with fold-down cuff
- Fully cushioned foot

**ATHLETIC SOCKS**

**328030** Large (10-13)  
Medium (9-11)  
Small (7-9)  
X-Small (5-7)

- 80% acrylic/14% nylon/6% elastic
- Knee-length tube sock
- Fully-cushioned foot

NEW **CORE MULTI-SPORT SOCKS**

**6922** Large (10-13)  
Medium (9-11)  
Small (7-9)  
X-Small (5-7)

- 95% polyester/15% rubber
- Knee-length tube sock



BLACK/ GRAPHITE R17  
DK GREEN/ BLACK 444  
GRPHITE/ BLACK 172  
MAROON/ BLACK 388



BLACK/ WHITE/ GRAPHITE 355  
DARK GREEN/ WHITE/ GRAPHITE 192  
GRAPHITE/ WHITE/ BLACK 196  
KELLY/ WHITE/ GRAPHITE 65E  
MAROON/ WHITE/ GRAPHITE 392



NAVY/ GRAPHITE 521  
ROYAL/ BLACK 289  
SCARLET/ BLACK 406  
WHITE/ BLACK 226



NAVY/ WHITE/ GRAPHITE 372  
ROYAL/ WHITE/ GRAPHITE 191  
ROYAL/ ATHLETIC GOLD/ GRAPHITE 64E  
SCARLET/ WHITE/ GRAPHITE G14  
WHITE 005



BLACK 080  
GOLD 025  
KELLY 030  
NAVY 065  
ORANGE 029



PURPLE 050  
RED 040  
ROYAL 060  
WHITE 005



ATHLETIC GOLD 595  
BLACK 080  
COL BLUE 089  
DARK GREEN 035  
GRAPHITE 059  
KELLY 030



LIME 096  
MAROON 745  
NAVY 065  
ORANGE 029  
POWER BLUE 812  
POWER PINK 809



POWER YELLOW 810  
PURPLE 050  
RASPBERRY 047  
ROYAL 060  
SCARLET 083  
SILVER GREY 016



TEAL 063  
VEGAS GOLD 023  
WHITE 005



BLACK 080



Inside divider for shoes or damp items



Mesh ball holder fits volleyball, soccer or basketballs



Without mesh ball holder

Mesh ball holder fits volleyball, soccer or basketballs, & stashes away when not in use



Reinforced multiuse side pockets with pass-thru strap for bat or lacrosse stick



## FREE FORM BACKPACK

327895 13" W x 19" H x 9"D

- 900-denier heavyweight 100% polyester with PU coating
- Matte PVC bottom and sides for durability
- Large main compartment for easy decoration
- Zippered pocket with brushed interior for valuables
- Two mesh side pockets
- Smooth finish top handle for comfort
- Padded back & shoulder straps
- Hidden key clip
- Internal zippered mesh valuables pocket



BLACK  
O80



CARBON  
HEATHER  
E83



GRAPHITE  
O59



NAVY  
O65



ROYAL  
O60



SCARLET  
O83



## ALL SPORT BACKPACK

327890 12"W x 18.5"H x 7"D

- 100% polyester heavy denier
- Large main interior compartment
- Front zipper pocket with deep, interior pouch holds shoes or accessories
- Side pouch pockets for water bottle with pass-thru for lacrosse stick or bat



BLACK/  
GRAPHITE/  
BLACK  
Q92



GRAPHITE/  
GRAPHITE/  
BLACK  
Q83



FOREST/  
GRAPHITE/  
BLACK  
Q88



MAROON/  
GRAPHITE/  
BLACK  
Q89



NAVY/  
GRAPHITE/  
BLACK  
Q93



ORANGE/  
GRAPHITE/  
BLACK  
Q90



PURPLE/  
GRAPHITE/  
BLACK  
Q91



ROYAL/  
GRAPHITE/  
BLACK  
Q84



SCARLET/  
GRAPHITE/  
BLACK  
Q86





NEW

### UNITED BACKPACK

327930 11.5"W x 19"H x 9.5"D

- 600-denier polyester with PVC coating
- 210-denier nylon with PVC coating
- Large main interior compartment with two corded zipper pulls
- Large front ventilated compartment with two corded zipper pulls
- Zippered pocket with brushed interior for valuables
- Front pocket with corded zipper pull with hidden inside mesh ball holder that fits Volleyball, Soccer or Basketballs
- Two mesh side pockets
- Adjustable buckles on sides to secure baseball bat
- Internal zippered mesh valuables pocket
- Key clip inside main compartment
- Padded back for support and comfort
- Web handle at top of backpack
- Adjustable padded shoulder straps



BLACK  
080

GRAPHITE/  
BLACK  
172

NAVY/  
BLACK  
308



### PLAYER BACKPACK

327850 18"W x 17"H x 9"D

- Heavy duty 600-denier polyester with soft PVC backing
- Adjustable padded shoulder straps
- Hand strap



ATHLETIC  
GOLD/  
BLACK/  
WHITE  
657

BLACK/  
BLACK/  
WHITE  
420

FOREST/  
BLACK/  
WHITE  
148

GRAPHITE/  
BLACK/  
WHITE  
U73

MAROON/  
BLACK/  
WHITE  
524



NAVY/  
BLACK/  
WHITE  
311

ORANGE/  
BLACK/  
WHITE  
322

PURPLE/  
BLACK/  
WHITE  
497

ROYAL/  
BLACK/  
WHITE  
526

SCARLET/  
BLACK/  
WHITE  
952

Mesh paneled  
zippered  
interior ball  
compartment

Mesh ball  
holder fits  
volleyball,  
soccer or  
basketballs



Two zippered side  
compartments  
with mesh panels





# MOMENTUM TEAM COLLECTION



## MOMENTUM TEAM TEE

**223501** Adult S-3XL  
4XL-6XL in select colors

**223601** Youth XXS-XL

**223701** Ladies S-3XL

- Dry-Excel™ 100% polyester interlock smooth knit with color secure® technology that helps prevent dye migration
- Ladies' Fit on style 223701
- Tag-free label
- Contrast color V-neck on Ladies
- Garment protects against the sun with 45+ UPF
- Set-in sleeves

AVAILABLE IN ADULT 4XL-6XL



BLACK/  
IRON  
62U

BLACK/  
WHITE  
420

NAVY/  
WHITE  
301

ROYAL/  
WHITE  
280

SCARLET/  
BLACK  
406

WHITE/  
IRON  
61U

AVAILABLE IN ADULT  
S-3XL & YOUTH



DK GREEN/  
BLACK  
444

ORANGE/  
WHITE  
320

AVAILABLE IN ADULT  
S-3XL & LADIES



COLUMBIA  
BLUE/  
WHITE  
293

AVAILABLE IN ADULT S-3XL



GOLD/  
WHITE  
245

KELLY/  
WHITE  
340

ROYAL/  
GOLD  
281

SCARLET/  
NAVY  
W86

VEGAS GOLD/  
BLACK  
252

AVAILABLE IN ADULT S-3XL, YOUTH & LADIES



IRON/  
WHITE  
99D

MAROON/  
BLACK  
388

PURPLE/  
BLACK  
496

ROYAL/  
BLACK  
289

SCARLET/  
WHITE  
408

FOR CANADIAN PRICING AND INVENTORY DETAILS  
VISIT [WWW.AUGUSTASPORTSWEAR.CA](http://WWW.AUGUSTASPORTSWEAR.CA)



POWERED BY  
**coolcore®**



**NEW**

**ESSENTIAL TEE POWERED BY COOLCORE®**

<b>222136</b>	Adult	S-3XL
<b>222236</b>	Youth	S-XL
<b>222336</b>	Ladies	XS-2XL

- 88% polyester/12% elastane Coolcore® fabric with color secure® technology that helps prevent dye migration
- Garment protects against the sun with 50+ UPF
- Tag-free label
- Crew neck
- Set-in sleeves with rolled forward shoulder seam



ATHLETIC GREY 009    BLACK 080    COL BLUE 089    DK GREEN 035



IRON 98D    MAROON 745    NAVY 065    OLIVE 039



PURPLE 747    ROYAL 060    SCARLET 083    WHITE 005



Non-branded tagless label



## NEXGEN WICKING TEE

**790** Adult S-3XL  
4XL in select colors

**791** Youth XS-XL

**1790** Ladies XS-3XL

- 100% polyester wicking knit with color secure® technology that helps prevent dye migration
- Ladies' fit on style 1790
- Non-branded tag-free label
- Set-in sleeves
- Safety Yellow is ANSI certified

### AVAILABLE IN ADULT 4XL



BLACK 080    NAVY 065    ROYAL 060    SCARLET 083    SILVER 099    WHITE 005

### AVAILABLE IN ADULT & YOUTH ONLY



OLIVE 039    TEAL 063    ELECTRIC ORANGE 79N    VEGAS GOLD 023    COYOTE 208

### AVAILABLE IN ADULT ONLY



COYOTE 208



COLUMBIA BLUE 089    DARK GREEN 035    GOLD 025    GRAPHITE 059    KELLY 030    MAROON 745

### AVAILABLE IN ADULT & LADIES ONLY



ORANGE 029    POWER BLUE 812    POWER PINK 809    PURPLE 747    SAFETY YELLOW\* 243

\*SAFETY YELLOW IS ANSI CERTIFIED

FOR CANADIAN PRICING AND INVENTORY DETAILS  
VISIT [WWW.AUGUSTASPORTSWEAR.CA](http://WWW.AUGUSTASPORTSWEAR.CA)



# MOMENTUM COLLECTION



## MOMENTUM TEE

<b>222818</b>	Adult	S-4XL 5XL & 6XL in select colors
<b>222819</b>	Youth	XXS-XL
<b>222820</b>	Ladies	S-3XL

- Dry-Excel™ 100% polyester interlock smooth knit with color secure® technology that helps prevent dye migration
- Ladies' fit on 222820
- Tag-free label
- Garment protects against the sun with 45+ UPF
- Set-in sleeves

### AVAILABLE IN ADULT 5XL-6XL



BLACK 080   GRAPHITE 059   NAVY 065   ROYAL 060   SCARLET 083   SILVER 099   WHITE 005

### AVAILABLE IN ADULT/YOUTH/LADIES ONLY



CARDINAL J36   DARK GREEN 035   ELECTRIC ORANGE 79N   KELLY 030   VEGAS GOLD 023



COLUMBIA BLUE 089   ELECTRIC YELLOW T52   GOLD 025   LIME 096   MAROON 745   ORANGE 029

### AVAILABLE IN ADULT & YOUTH ONLY



POWER BLUE 812   POWER PINK 809   PURPLE 747   TEAL 063   SAFETY YELLOW 243   OLIVE 039



MOMENTUM COLLECTION



**NEW**

**MOMENTUM SHORTS**

<b>223522</b>	Adult	S-3XL
<b>223622</b>	Youth	S-XL
<b>223722</b>	Ladies	S-3XL

- Dry-Excel™ 100% polyester interlock smooth knit with color secure® technology that helps prevent dye migration
- Garment protects against the sun with 45+ UPF
- Tag-free label
- 2-inch brushed back elastic waistband with inside drawcord
- Side seam pockets
- Side vents



6-inch  
inseam  
(Youth  
inseam  
graded)



5-inch  
inseam

Ladies Fit



BLACK  
080



GRAPHITE  
059



NAVY  
065



ROYAL  
060



SCARLET  
083



SILVER  
099







### SCRIMMAGE VEST

<b>321200</b>	Adult	One Size
<b>321201</b>	Youth	XS
<b>321201</b>	Youth	One Size

- 100% polyester tricot mesh
- Improved fit, longer length



ATHLETIC GOLD  
595

LIME  
096

ROYAL  
060

SCARLET  
083



### OCTANE SHORTS

<b>1425</b>	Adult	S-3XL
<b>1426</b>	Youth	XXS-L

- 100% polyester wicking knit
- Full-cut
- Tag-free label
- Covered elastic waistband with inside drawcord
- 7-inch inseam
- Youth inseam graded



BLACK  
080

RED  
040

ROYAL  
060

COLUMBIA  
BLUE  
089

NAVY  
065

ORANGE  
029

MAROON\*  
045



GOLD  
025

PURPLE\*  
050

KELLY  
030

DARK  
GREEN  
035

SILVER  
GREY  
016

GRAPHITE  
059

\* MAROON & PURPLE SHADES CAN VARY BY BRAND, PLEASE CONTACT OUR CUSTOMER CARE WITH QUESTIONS

FOR CANADIAN PRICING AND INVENTORY DETAILS  
VISIT [WWW.AUGUSTASPORTSWEAR.CA](http://WWW.AUGUSTASPORTSWEAR.CA)



**HIGH  
FIVE** 

**AUGUSTA**  
*SPORTSWEAR BRANDS*  
[augustasportswear.ca](http://augustasportswear.ca)